

122 Main Street
Sayville, NY 11782

January 2011

www.patchworks.com



631-589-4187

STORE HOURS

Monday-12 noon-6pm
Tues-Fri-10am 6pm
Sat-10am 5pm
Closed Sundays

HERE'S THE FINE PRINT:
Before signing up for a class, please check your schedule and read our class policy. To be fair to our teachers and other students, we must remain firm on our registration and cancellation policies.

Class size is limited to 6 to 8 students, so register as soon as possible. Full payment of class fee is required at time of registration. Refunds are given if you notify us no later than one week prior to the start of the class. Patchworks reserves the right to cancel classes due to insufficient enrollment. If we cancel a class your money will be refunded. Lists of other tools and sewing supplies are available at time of registration. Most supplies are available for purchase at Patchworks. Machines are available for use during class. Please let us know when signing up if you require a class machine. (Please note that most classes require homework that involves the use of a sewing machine!) Beginning classes do not require any quilting skills. Intermediate classes assume you have taken a beginner's class and know how to rotary cut and finish a quilt. Ask which classes would be best for you.



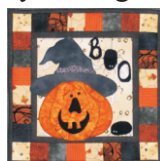
TONGA RHAPSODY A stunning 12- month Block of the Month Program from Wing and a Prayer Design featuring gorgeous jewel tone batiks. Twelve blocks are joined on-point with pieced sashings and set off with pieced borders. The sample is done and hanging in the store. It's a real beauty! Sign-up fee is \$24 and includes the pattern. Each month's kit costs \$22 and they will include the entire quilt top. Don't wait, quantities are limited!

STITCHER'S GARDEN BLOCK OF THE MONTH

Back by popular demand, here's a way for you to get the most out of your sewing machine. Explore all the decorative stitches on your machine with the Stitcher's Garden Block of the Month quilt and get to use a foot other than the 1/4" foot! Sign-up fee is \$45 and includes 4 yards of a background fabric of your choice. Beginning January 25, demonstrations will be given on the fourth Tuesday of each month at 10:30, 1:30 and 5:30. Call the store to register.



LITTLE QUILTS SQUARED Create an adorable table top quilt for each month with Little Quilts Squared from The Wooden Bear Quilt Designs. For \$20 a month, you will receive a kit with the pattern, fabric, and notions needed to make that month's quilt. These quick and easy machine appliquéd quilts will be available on the first of each month. The table top stand is available separately. Sign up for the Little Quilts Squared BOTM by calling the store. Don't wait, there's a limited number of kits available!



MACHINE APPLIQUÉ Use a Little Quilts Squared quick and easy pattern to learn basic fusible web appliqué. (Perfect class for anyone looking to refresh their machine appliqué skills for our Little Quilts Squared BOTM!) Beginner machine appliqué skills and up; requires basic quilting skills. Wednesdays, January 12 & 19 10:30-1pm OR 6-8:30pm \$45



TULIP LOG CABIN Bright and colorful (not to mention easy to make) the Tulip Log Cabin will keep you warm while you're waiting for the garden variety! Great quilt for the confident beginner and up. Thursdays, January 13 & 20 10:30-1pm OR 6-8:30pm \$45

BEGINNING PATCHWORK This class will introduce you to the basics of quilt making: rotary cutting, machine piecing and finishing. Class fee includes Patchworks' Party Mix pattern and your choice of a Patchworks' Packet (up to \$27 value) for quilt top. Beginner. Mondays, January 10, 17, 24, 31 12:30-3pm OR Tuesdays, January 4, 11, 18 & 25 6-8:30pm \$98



FREE MOTION LOCOMOTION! Now boarding at Patchworks Station, the train bound to quilting freedom! Learn the motion—the free motion method of quilting. The engineer will direct you in the basics of machine preparation and setup. Then get on your way as the conductor guides you through the winding curves and up and down hills. Relax and learn the motion, the free motion

locomotion! Saturday, January 22 10:30-1:30pm \$25

Questionable Outcome!

Most quilts you make have a foregone conclusion. Take a chance, join the fun, and make a quilt with a

Put your inner sleuth to the test with a mystery quilt from Debbie Caffrey of Debbie's Creative Moments. This six-month mystery will keep you guessing every step of the way. All you need to start is to purchase the required fabrics. At the beginning of each month you'll get a new clue. And just when you think you've got it figured out...well, you'll see!

Come on into the store at anytime on Tuesday, January 18 for a quick demonstration of Clue #1 and some help in choosing your fabrics.

Tuesday Club 2011 "Connect Four"



Tuesday Club is an in-store club that meets on the first Tuesday of each month, beginning in February and ending on the first Tuesday of November. Each month you'll receive a pattern and fabric as part of that month's project. Bring the completed project to the next month's meeting and receive the next fabric and pattern free! Here's the catch—you must bring the completed piece to the next meeting or pay \$5 for the next one. No exceptions! A brief demonstration will be given for that month's project every hour on the hour starting at 10am through 5pm. We'll have the last demo at 5:30pm. The sign-up fee is \$20 but sign up by January 15, 2011 for an early bird price of only \$15!



EmbroidaBlock 2011 Goose Tracks HoopSisters' newest EBOTM series is nothing like the previous years! 30 unique blocks are created using an in-the-hoop technique to combine embroidery with piecing and quilting. Multi-formatted CDs are available monthly for only \$10 a month. Add an optional border with the Goose Tracks Border CD--the perfect complement to the Goose Tracks EmbroidaBlock 2011. Also new this year is a Bracelet Jump Drive available for \$24. Beginning in February, demonstrations will be given on the second Saturday of each month (unless otherwise noted).

ARE YOU IN THE KNOW?

It's time to shake off those holiday goodies and put your thinking caps on! Write your answer to the question of the month and drop off the entry form at the Patchworks. Who knows? You may be the next winner of a \$25 Patchworks' Gift Certificate. Good luck!

JANUARY TRIVIA

What does an appliqued tulip signify on a quilt?

Email _____ Phone _____

Name _____



20%

SAVE! SAVE! SAVE!

Off any one book, pattern or notion*

Name _____

Address _____

Email/Phone _____

*Excludes fabric, machines, software (including embroidery CDs), furniture, special order items, sale items, gift certificates and classes. Coupons must be presented at time of purchase. Not valid on prior purchases. Name and address must be filled out for coupon to be valid. One per customer. Offer valid January 1-31, 2011.